



Corporate Traveller

Brand Profile

South Africa

Contents

About Corporate Traveller.....	2
The difference.....	3
What sets us apart.....	3
Global locations.....	4
CT national management team.....	4
Dedicated support 24/7 365.....	5
Corporate Traveller Lifestyle.....	5
Technology.....	6
Meet Sam.....	6
Corporate social responsibility.....	7

About Corporate Traveller

The Corporate Traveller story began in 1993 when the brand was launched as Flight Centre Travel Group's (FCTG) first-ever business travel operation in Melbourne. In 1999 the first South African Corporate Traveller operation was established at the back of Flight Centre's Sandton retail store in Johannesburg. We now operate in 6 locations across South Africa. Corporate Traveller is FCTG's 2nd largest brand and recipient of the coveted Deloitte Platinum Employer Seal for 2 consecutive years. The Corporate Traveller brand is founded on the principle of making the business of travel easier for our customers. Building personal relationships and offering 'refreshingly human' services blended with effective technology sets us apart from other travel management companies.



The Difference

Through a boutique, personalised approach to corporate travel, we expertly manage the full travel portfolios of small and medium-sized businesses.

What sets us apart?



Local specialists

As BBBEE Level 1 partner with over 20-years in South Africa, we know what it takes to deliver value.



Travel experts at your service

A dedicated expert providing a complete end-to-end travel service including 24/7 support.



Seamless technology

Future-focused technology that makes your business travel simpler, faster and smarter.



Visibility & Transparency

Reporting capability that gives you the complete picture of your travel activities and expenditure.



Greater choice and value

Our global partnerships deliver you more travel options, better trading terms and savings.



Flexible payment options

Our payment options range from billbacks and lodge cards to an interest-free credit account.

Global Locations

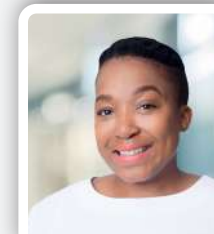
Corporate Traveller's offices are found in various locations around the world, including the UK, USA, Canada, South Africa, Australia and New Zealand



Corporate Traveller National Management Team



BONNIE SMITH
FCTG Corporate General Manager



LEBOGANG NTOAGAE
Corporate Supply & Distribution Director



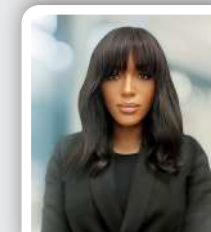
JUSTIN WESSELS
Financial Controller



ANNEKE BORNMAN
Head of Onboarding



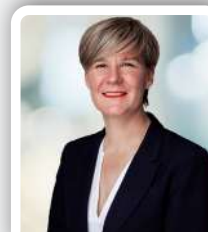
HERMAN HEUNES
Operations Manager



RATEGANG MOROKE
Operations Manager



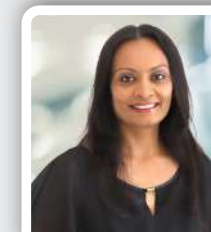
LANCE NKWE
Corporate Marketing Manager



RAYLENE PIENAAR
Head of Customer Success



MICHELLE COMPTON
National Sales Leader



HARSHA KANJI
Product Manager & Solution Specialist



KERRY-LEE BOVEY
Financial Controller (Accounting Operations)

Dedicated Support 24/7 365

Onboarding:

Our Onboarding Team deliver an efficient and successful transition to professionally managed business travel. Corporate Traveller's diverse customer base requires an adaptable onboarding framework that streamlines the change management process, regardless of industry. Using the experience of our staff and extensive customer feedback, Corporate Traveller created a consultative process that efficiently matches best-practice travel solutions to a customer's business objectives.

Travel Management:

Our highly experienced Travel Managers are the heart of Corporate Traveller and the reason we can deliver world-class service. Each Travel Manager has a minimum of 5 years' travel experience providing them with an understanding of your needs and the products and fares available to you.

Customer Success Management:

Our Customer Success Managers are focussed on optimising your systems and processes, and maximising your travel programme health. They care about your customer experience as well as interpreting your company's data to plan for your ongoing success.



Corporate Traveller lifestyle is a concierge travel service designed to offer corporates, executives and employees a gateway to exclusive travel destinations and luxurious holiday packages.



Our years of expertise in corporate and leisure travel, strategic supplier partnerships and global buying power enable us to offer you the widest range of local and international holiday deals accommodation, flights and car rental - at the best possible prices.

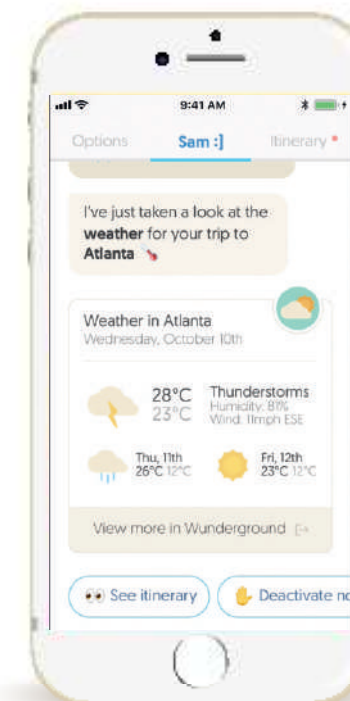
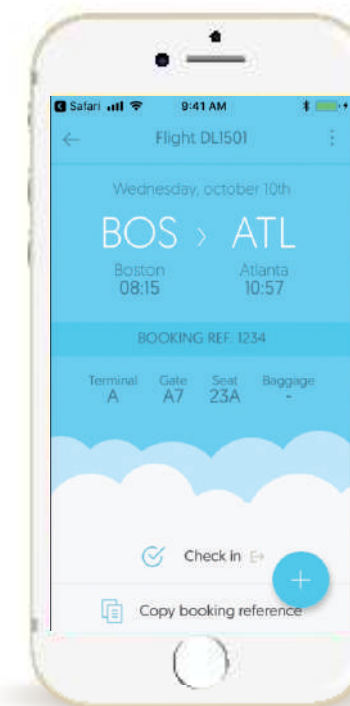
Technology

Instead of relying on separate systems, an integrated technology suite like **YOUR.CT** provides a simple way for travellers to research, approve and book their travel. What's more is that customers have one simple platform with access to customised dashboards and relevant information for the booker, traveller or manager. Through **YOUR.CT** customers can view itineraries and reports, confirm bookings, manage profiles, make pre-trip approvals, track travellers, and all the essentials in between.

YOUR.CT tech tools	Benefits
Booking	Powered by Concur, our intuitive online booking tool provides access to low-cost and scheduled airlines as well as negotiated fares. Options can be preferenced according to your travel policy.
Reports	Use our benchmark reports to track your policy compliance, analyse your travel patterns and identify new opportunities to save.
Traveller Tracking	Help support your duty of care policy by following your travellers in real time. View a snapshot of your travellers by risk type, location, and flight number.
Approve & Request	Requesting approval through YOUR.CT removes the need for back and forth emailing, saving time for both requester and approver.
Profile Management	Create staff traveller profiles, including passport details, frequent flyer numbers and dietary preferences. Save your travel bookers from requesting the same information each time they make a booking.

Meet Sam:]

Our mobile app Sam, ensures travellers have all the essential information on hand, including itineraries, in-trip notifications and alerts - all delivered in real time, 24-7. Make bookings, get the latest news and tips, and stay in contact with your team



Corporate Social Responsibility

Corporate Traveller's Travel Supplier Empowerment Programme

Corporate Traveller understands the impact & importance of B-BBEE and the need for a strong domestic travel industry. Real results can only be achieved if established TMCs invest in empowering small and upcoming travel providers. So, we're on a mission to support and nurture South Africa's travel economy through our Travel Supplier Empowerment Programme.

How does it work?

As part of the Flight Centre Travel Group, Corporate Traveller leverages 3 integrated solutions:

- Room8
- Transport Hub
- Local Hotels

Greater visibility for SME suppliers means better reach and more business opportunities.

Local Projects

Corporate Traveller is dedicated to creating a positive impact in the local community through several social initiatives. We provide 20 full bursaries annually to students from underprivileged backgrounds in local schools, enabling them to access quality education. Furthermore, Corporate Traveller offers monthly contributions to local care-based facilities to support the provision of quality care to those in need. An internal campaign has also been created aimed at providing financial assistance to employees who may require it.

Sustainability

Corporate Traveller has committed to Net Zero by 2050.

Protecting our environment is essential to the future of tourism. As part of Flight Centre Travel Group, one of the world's largest travel groups, we are well-positioned to play a role in affecting this kind of positive change where we work, live and travel.



**Bring an
expert on board**

0877 40 50 90

corporatetraveller.co.za

 **CORPORATE TRAVELLER™**